



**GENERAL
STRUCTURES
INC**
A DWM COMPANY

Quick-Ship Program

ORDERS THAT MEET THE FOLLOWING CRITERIA SHIP IN 2 WEEKS OR LESS:

- » **Standard square straight steel poles without any modifications** (i.e., special bolt circle, pole height other than listed here (cutback), drill mount and tenon top on same pole, mid-pole brackets, duplex/GFI receptacle, extended warranties, etc.)
- » **Standard T2 tenon or drilled up to four fixtures** (see page 2 for top-mount and bracket options)
- » **Dark Bronze, Textured Black, Textured Medium Bronze, Textured Grey, and Textured White powder-coat finish only**
- » **19 poles or less**

All poles that meet the criteria above are shipped out with a direct-drill or tenon-mount top (see page 2).

THE FOLLOWING DISQUALIFIES AN ORDER FROM OUR QUICK-SHIP PROGRAM; STANDARD LEAD TIMES AND PRICING WILL APPLY FOR SUCH ORDERS:

- » **Any pole modifications.**
- » **Color requests outside of those noted in the section above.**
- » **Orders of 20 poles or more.**

QUICK-SHIP POLES

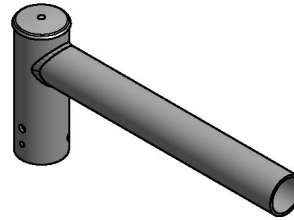
CATALOG NUMBER	MOUNTING HEIGHT (FT)	EFFECTIVE PROJECTED AREA RATING W/ 1.3 GUST (SQ. FT.)			
		80	90	100	120
CPS-1-4011-15	15	15.1	12.3	9.8	7.0
CPS-1-4011-20	20	9.0	7.3	5.9	4.2
CPS-1-4011-25	25	4.1	3.3	2.6	1.8
CPS-1-5011-25	25	8.5	6.9	5.6	4.0
CPS-1-5011-30	30	4.2	3.4	2.7	1.9
CPS-1-5007-30	30	10.6	8.6	6.9	4.9

QUICK-SHIP DRILL, TENON, AND BRACKET OPTIONS

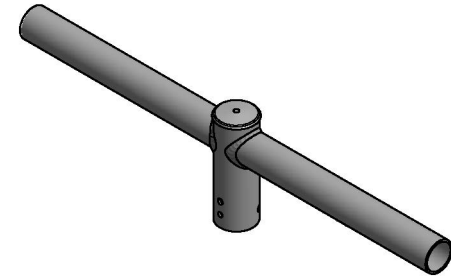
Below are the bracket options that may accompany the Square Straight Steel orders of a quantity of 19 or less poles and ship in 2 weeks or less. Selection of other brackets or colors outside of the color key excludes an order from the Quick-Ship Program.

Color Key for Quick-Ship Products

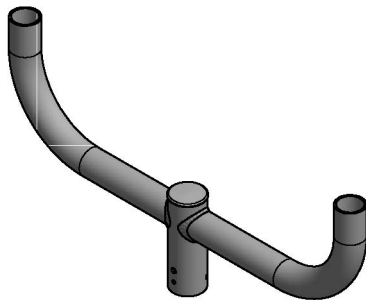
DESIGN	COLOR
TWH	Textured White
DB	Dark Bronze
TMB	Textured Medium Bronze
TGR	Textured Gray
TBK	Textured Black



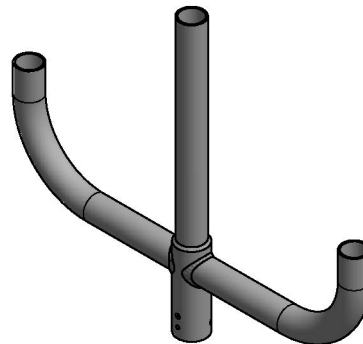
SB-19



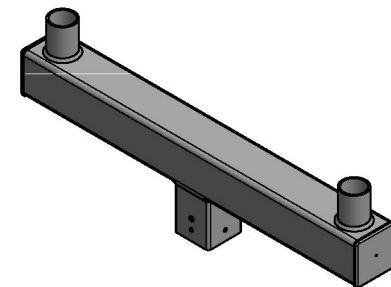
SB-218



PTB-2



PTB-3



SMB-2